



the framed wall .com

# Collared T-shirt With Tipping



DURABLE



SOFT HANDFEEL



ANTI PILLING



BREATHABLE

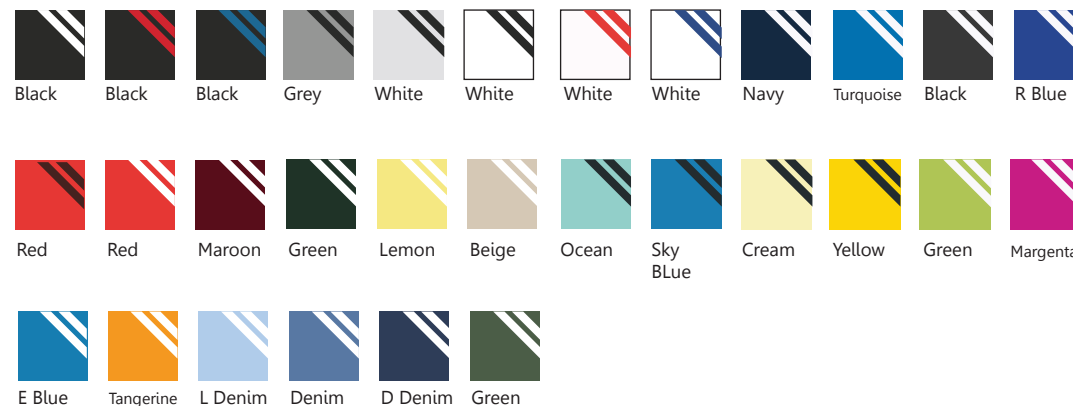


COLOR FASTNESS  
GARRANTEED



BLACK W  
RT - 1

## Colors :

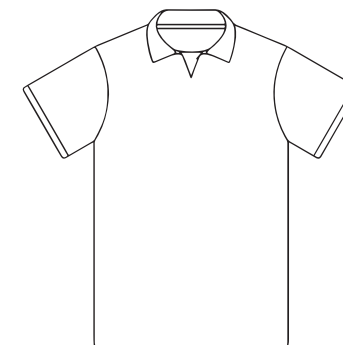


## Product Specifications:

- 250 – 260 gsm
- 100% combed ring-spun cotton
- Pique knit
- Compacted Pre-shrunk
- Double needle stitch on the shoulder, sleeves and bottom hem
- 3 Button placket with dyed to match buttons and bottom
- Soft flow dyed
- Colour fastness Guaranteed

## Size Chart:

Size	Chest	Length{inches}
• s	38	26
• m	40	27
• L	42	28
• XL	44	29
• 2XL	46	30
• 3XL	48	31
• 4XL	50	31
• 5XL	54	32



# Cotton Collared T-shirt



## Colors :

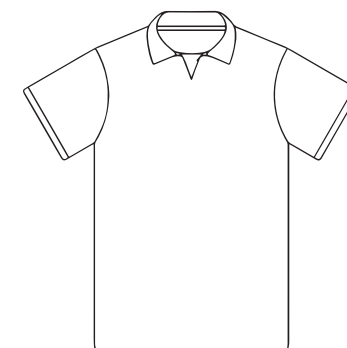


## Product Specifications:

- Cotton rich fabric
- Approx 550 GMS
- Bio-washed Fabric
- Eco-friendly manufactured
- Brushed on the inside
- Ultra soft
- Zipper
- Kangaroo pockets

## Size Chart:

Size	Chest	Length{inches}
• s	36	26
• m	38	27
• L	40	28
• XL	42	29
• 2XL	44	30
• 3XL	46	31



# Cotton Round Neck T-shirt



DURABLE



SOFT HANDFEEL



ANTI PILLING



BREATHABLE



COLOR FASTNESS  
GURANTEED



## Colors :

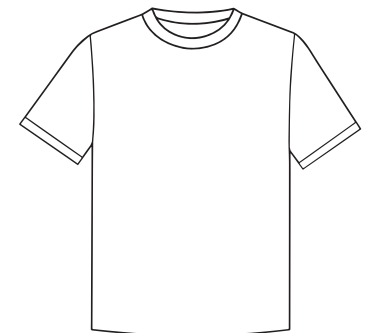


## Product Specifications:






- Approximately – 180 GSM (5.9 ounces)
- 100% Ring-spun Cotton (Melange colours contain a % of polyester)
- Bio-wash Fabric
- Compacted Pre-shrunk
- Double needle stitch on the sleeves and bottom hem
- Color fastness Guaranteed
- ONLY SIZE LABEL
- Available Sizes Small to 3XL

## Size Chart:

Size	Chest	Length{inches}
• s	38	26
• m	40	27
• L	42	28
• XL	44	29
• 2XL	46	30
• 3XL	48	31
• 4XL	50	31
• 5XL	54	32

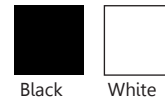


# Cotton Round Neck Oversize Tshirt

-  DURABLE
-  SOFT HANDFEEL
-  ANTI PILLING
-  BREATHABLE
-  COLOR FASTNESS GURANTEED



## Colors :

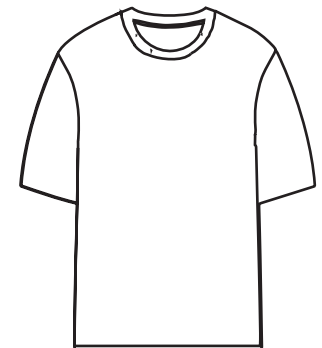


## Product Specifications:

- 100% Polyester
- Breathable micro dot
- 170 – 180 GSM
- Soft flow dyed
- Color fast
- Jacquard neck tape
- Contemporary fit
- Moisture wicking

## Size Chart:

Size	Chest	Length	Shoulder
• s	21	27.5	6.5
• m	22	28.5	7
• L	23	29.5	7.5
• XL	24	30.5	8
• 2XL	25	31.5	8.5



# Cotton Round Neck Sweatshirt



DURABLE



SOFT HANDFEEL



ANTI PILLING



BREATHABLE



COLOR FASTNESS  
GURANTEED

## Colors :

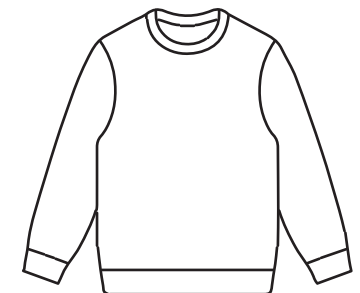


## Product Specifications:

- 100% Polyester
- Breathable micro dot
- 170 – 180 GSM
- Soft flow dyed
- Color fast
- Jacquard neck tape
- Contemporary fit
- Moisture wicking

## Size Chart:

Size	Chest	Length{inches}
• s	38	26
• m	40	27
• L	42	28
• XL	44	29
• 2XL	46	30
• 3XL	48	31
• 4XL	50	31
• 5XL	54	32





# Cotton Hoodies



DURABLE



SOFT HANDFEEL



ANTI PILLING



BREATHABLE



COLOR FASTNESS  
GARRANTEED



## Colors :



Black

Grey  
Melange

White

True  
Navy

## Product Specifications:

- Cotton rich fabric
- Approx 550 GMS
- Bio-washed Fabric
- Eco-friendly manufactured
- Brushed on the inside
- Ultra soft
- Zipper
- Kangaroo pockets

## Size Chart:

Size	Chest	Length{inches}
• s	40	26
• m	42	27
• L	44	28
• XL	46	29
• 2XL	48	30
• 3XL	50	30



# Cotton Round Neck Kids T-shirt



DURABLE



SOFT HANDFEEL



ANTI PILLING



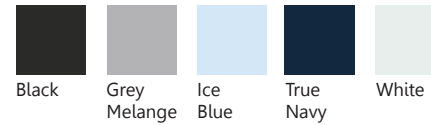
BREATHABLE



COLOR FASTNESS  
GARRANTEED



## Colors :

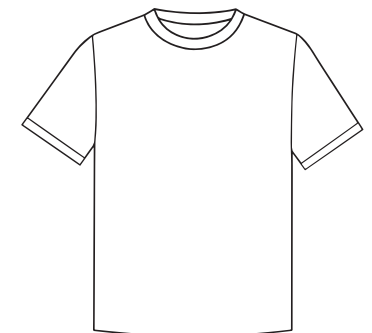


## Product Specifications:

- Approximately – 180 GSM (5.9 ounces)
- 100% Ring-spun Cotton (Melange colours contain a % of polyester)
- Bio-wash Fabric
- Compacted Pre-shrunk
- Double needle stitch on the sleeves and bottom hem
- Color fastness Guaranteed
- ONLY SIZE LABEL
- Available Sizes Small to 3XL

## Size Chart:

Size	Chest	Length{inches}
• s	38	26
• m	40	27
• L	42	28
• XL	44	29
• 2XL	46	30
• 3XL	48	31
• 4XL	50	31
• 5XL	54	32





**SUBLIMATION PRINT**



**SCREEN PRINT**



**DTF PRINT**



**EMBROIDERY**



# Poster Design



## Product Specifications:

- Material: Glossy paper/Matte paper/Vinyl.
- Sizes: A3 (11.7 x 16.5 inches), A2 (16.5 x 23.4 inches), A1 (23.4 x 33.1 inches).
- Paper Thickness: 150-300 GSM.
- Print Type: Full-color digital printing.
- Finish: Glossy/Matte.
- Features: High-resolution print, fade-resistant, tear-resistant (optional), customizable design and artwork.
- Color Options: Full-color printing with vivid details.



# Acrylic Cutout



## Product Specifications:

- Material: High-quality acrylic (3-5 mm thickness).
- Dimensions: Customizable shapes and sizes
- Finish: Glossy/Matte.
- Features: Laser-cut precision, durable, lightweight, customizable print or design.
- Mounting: Stand option or adhesive for wall mounting.

# Mouse Pad(small)



## Product Specifications:

- Material: Rubber base with fabric top.
- Size: 7.8 x 9.8 inches (20 x 25 cm).
- Thickness: 3 mm.
- Features: Non-slip base, smooth surface for precise mouse control, customizable print/design.
- Edge Type: Stitched edges for durability.

# Mouse Pad(big)



## Product Specifications:

- Material: Rubber base with fabric top.
- Size: 31.5 x 11.8 inches (80 x 30 cm).
- Thickness: 3-4 mm.
- Features: Extended size for keyboard and mouse, non-slip base, smooth surface, customizable print/design.
- Edge Type: Stitched edges for durability.

# Cap with Print



## Product Specifications:

- Material: Cotton/Polyester/Blended Fabric.
- Print Type: Screen printing/Dye sublimation.
- Size: Adjustable strap (one size fits most).
- Features: Customizable full-color print, breathable fabric, sweat-absorbent band.
- Color Options: Customizable/Various colors available.
- Extras: Eyelets for ventilation, pre-curved visor.



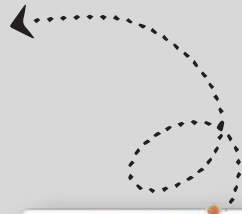
# Cap with Embroidery Design



## Product Specifications:

- Material: Cotton/Polyester/Blended Fabric.
- Embroidery Type: Customizable embroidered logo/text.
- Size: Adjustable strap (one size fits most).
- Features: 3D or flat embroidery, high durability, breathable, sweat-absorbent band.
- Color Options: Customizable/Variou colors available.
- Extras: Eyelets for ventilation, pre-curved visor.

# Mobile Glass Cover



## Product Specifications:

- Material: Tempered glass back with TPU (Thermoplastic Polyurethane) edges.
- Compatibility: Available for all major phone models.
- Finish: Glossy glass back with shockproof edges.
- Features: Scratch-resistant, shock-absorbent, slim fit, anti-fingerprint.
- Design: Customizable print/logo on glass back.
- Color Options: Customizable/Various colors for the TPU edges.

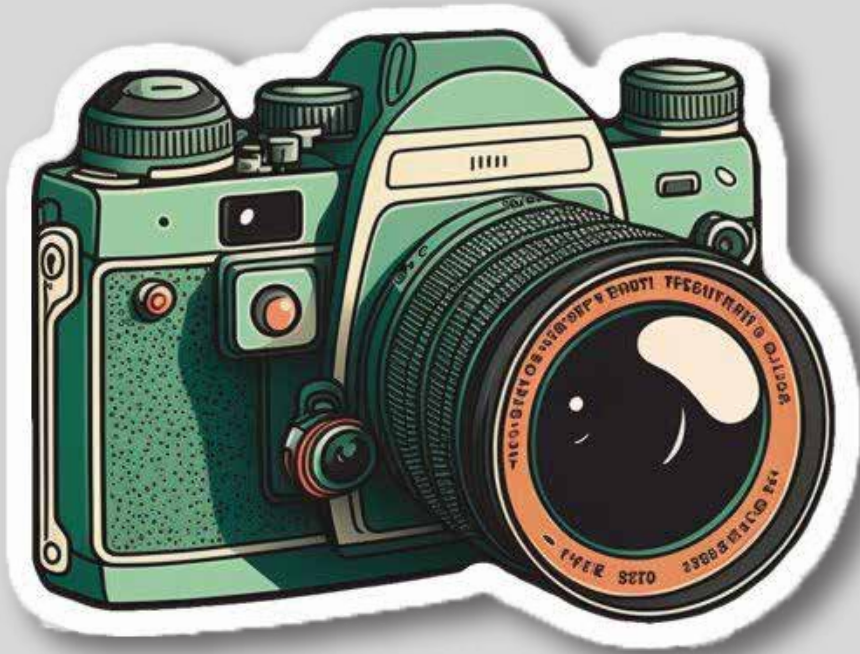
# Pin Badges



## Product Specifications:

- Material: Metal with enamel coating.
- Size: 1-2 inches (customizable).
- Print Type: Matte/Glossy enamel print.
- Attachment: Butterfly clutch/Pin back
- Finish: Matte/Glossy.
- Features: Customizable design with logo or artwork, durable, fade-resistant.
- Color Options: Full-color enamel with metallic accents (gold, silver).

# Stickers



## Product Specifications:

- Material: Vinyl/Paper.
- Finish: Glossy/Matte.
- Sizes: Customizable (small, medium, large).
- Features: Water-resistant, UV-resistant, durable, customizable shape, easy peel-off.
- Adhesive: Strong, removable without residue.
- Print Type: Full-color digital printing.
- Use: Indoor/Outdoor applications.